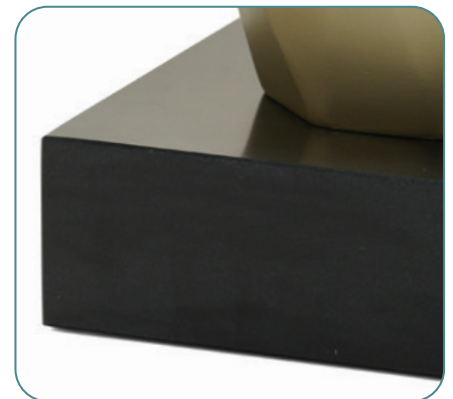
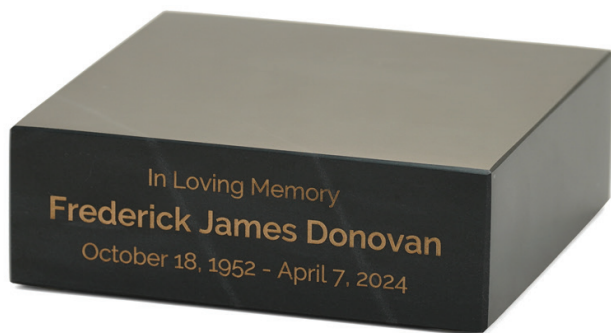




Marble Base

Each of our marble bases is crafted from natural marble, showcasing unique veining and color variations that enhance its inherent beauty. Designed to complement most full-sized urn, this base gives the ability to add a personal touch to urns where personalization may not be available. With choices of gold or silver engraving, your meaningful inscription will be cherished forever.



Marbel Base

Made of Natural Marble



Crafted of natural marble

Coordinates with most full sized urns

Uniqute marble pattern in each piece

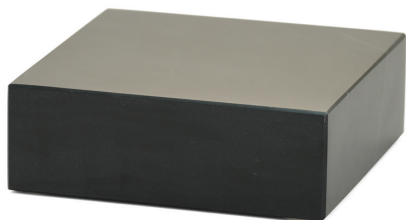
Allows for personalizing urns that otherwise can not be

Dimensions
2.0 x 6.00 x 6.00 in

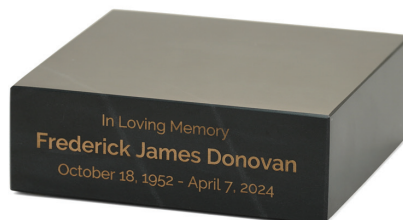
Product Weight
7.4 lbs


Capacity
N/A

Case Quantity
6/case



Marble Base 
90B



Marble Base Gold 
199800



Marble Base Silver 
199801